



---

**CESEP ASBL**

---

**CENTRE FOR EUROPEAN SOCIAL  
AND ECONOMIC POLICY**

**Stefanos GRAMMENOS**

Rue de la Pacification, 65  
B-1000 BRUXELLES

E-Mail : [cesep@skynet.be](mailto:cesep@skynet.be)

Website: [www.cesep.eu](http://www.cesep.eu)

# INDICATORS OF DISABILITY EQUALITY IN EUROPE

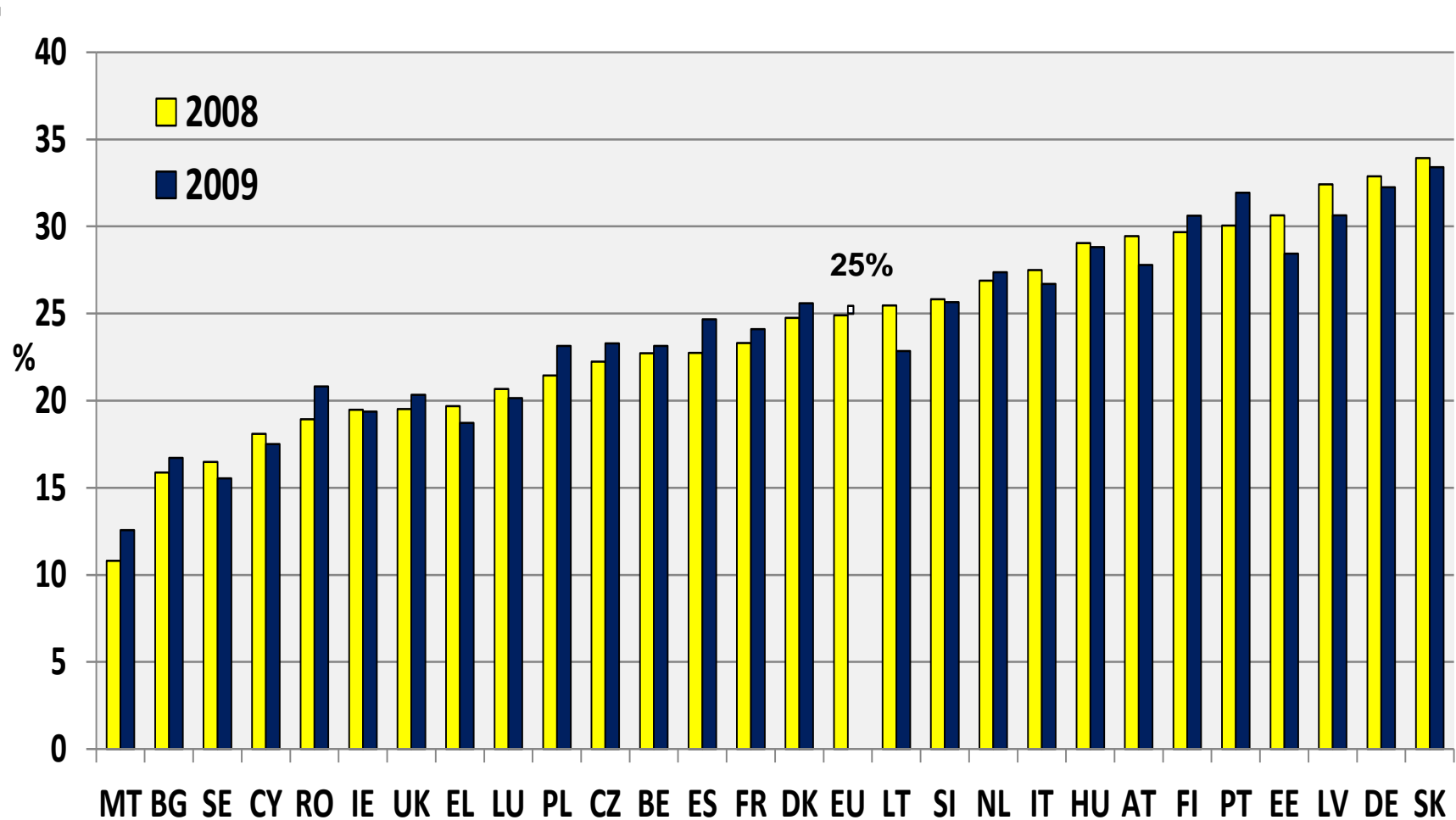
*Comparative data on a selection of quantitative implementation indicators*

November 2011

FOR  
**Academic Network of European Disability Experts**  
**ANED**

# NUMBER OF PEOPLE WITH DISABILITIES

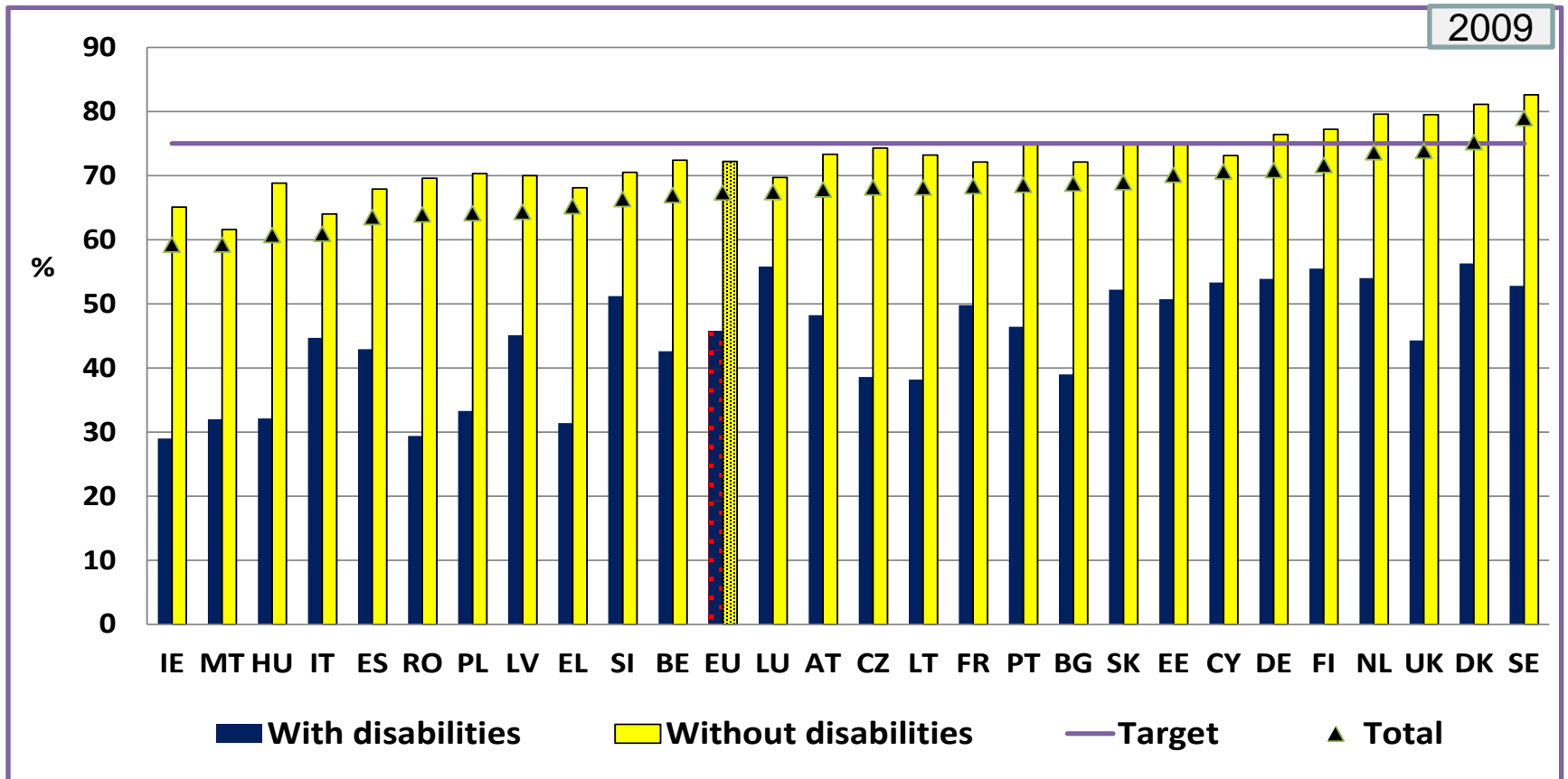
% of the same age group. Age 16+



# EMPLOYMENT RATE

Europe 2020: 75 % of the population aged 20-64 should be employed.

Number of persons aged 20 to 64 in employment as a % of the same age group



EU

Disabled: 46%

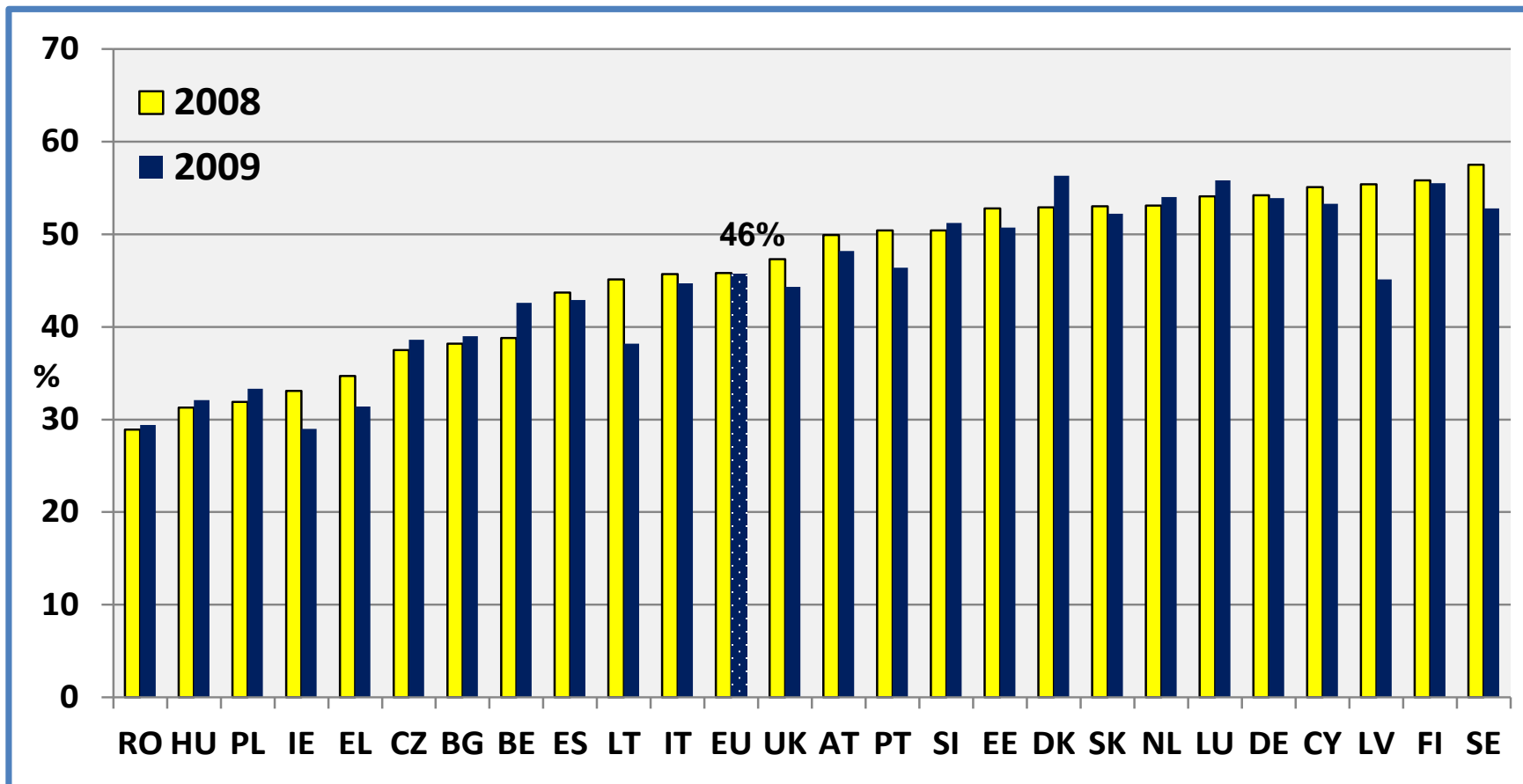
Non-Disabled: 72%

Total: 67%

# PEOPLE WITH DISABILITIES: EVOLUTION OF THE EMPLOYMENT RATE

Europe 2020: 75 % of the population aged 20-64 should be employed.

Number of persons aged 20 to 64 in employment as a % of the same age group

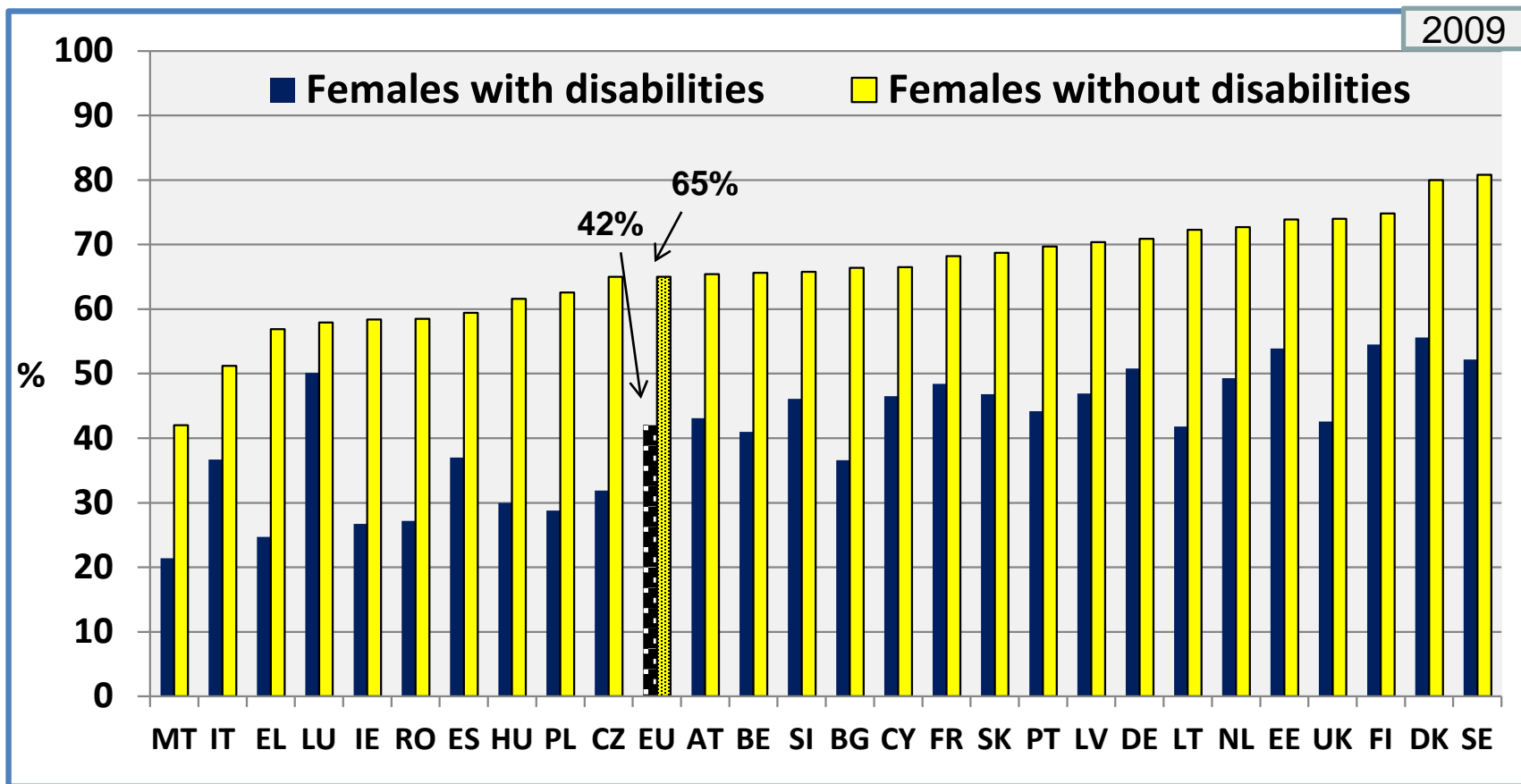


EU Non-Disabled: 2008: 74%, 2009: 72%

# FEMALE EMPLOYMENT RATE

Europe 2020: 75 % of the population aged 20-64 should be employed.

Number of persons aged 20 to 64 in employment as a % of the same age group

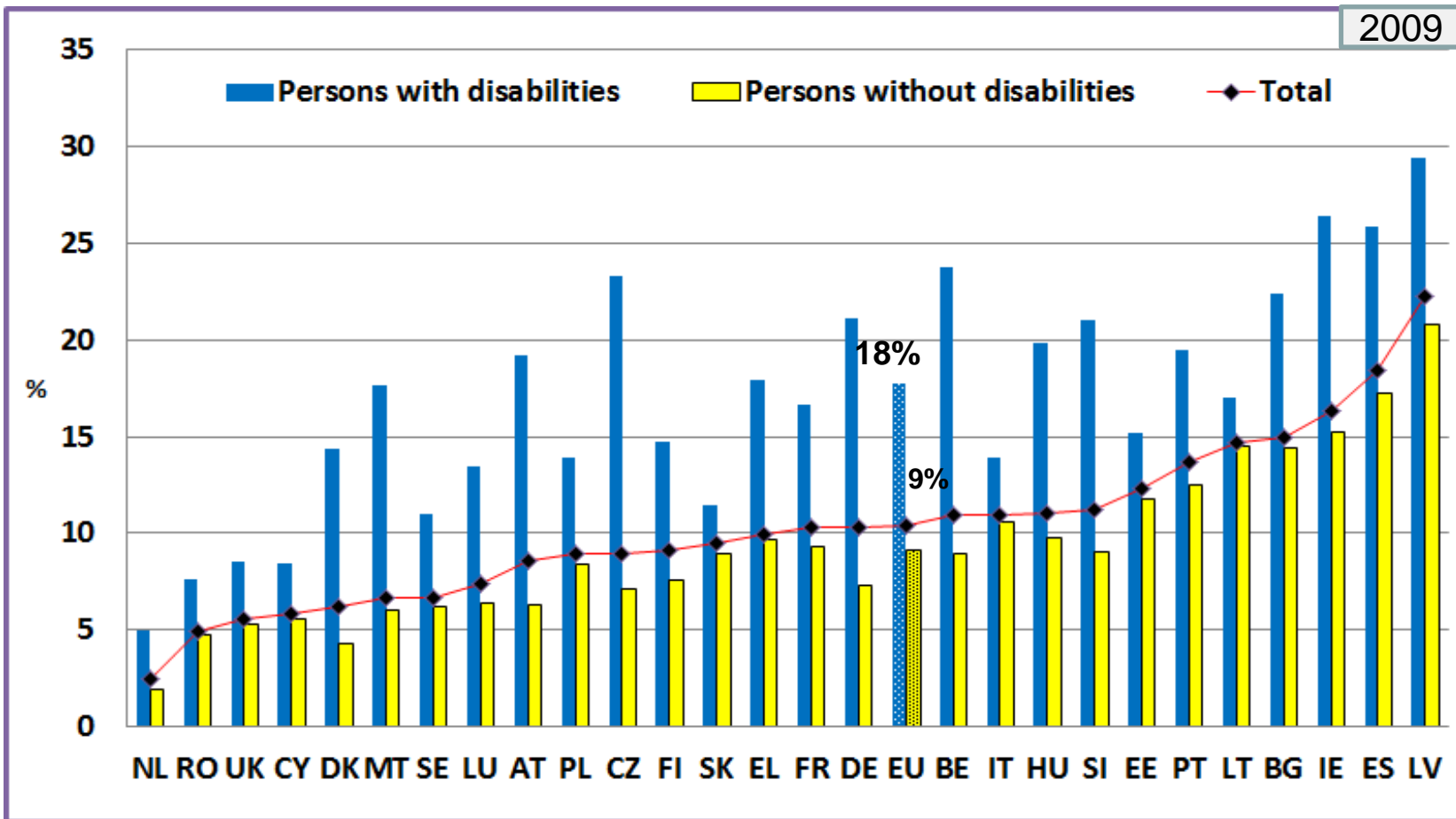


EU Male Employment Rate: Disabled: 50%: Non-Disabled: 79%

# UNEMPLOYMENT RATE

Number of unemployed persons aged 20 to 64 as a % of the labour force (same age)

2009



EU Female Unemployment

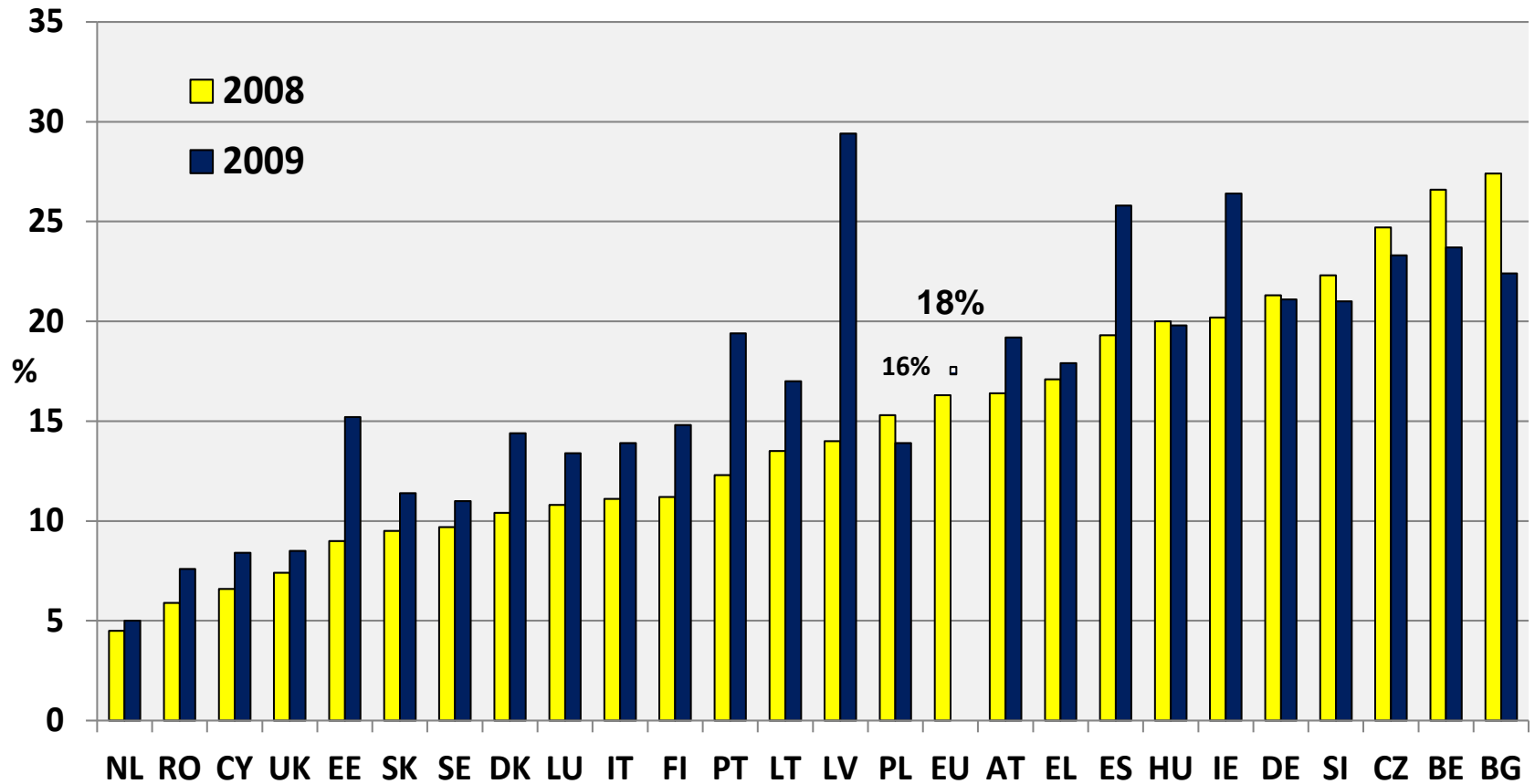
Disabled: 17%

Non-Disabled: 9%

Total: 11%

# PEOPLE WITH DISABILITIES: EVOLUTION OF UNEMPLOYMENT RATE

Number of unemployed persons aged 20 to 64 as a % of the labour force (same age)



EU Non-Disabled

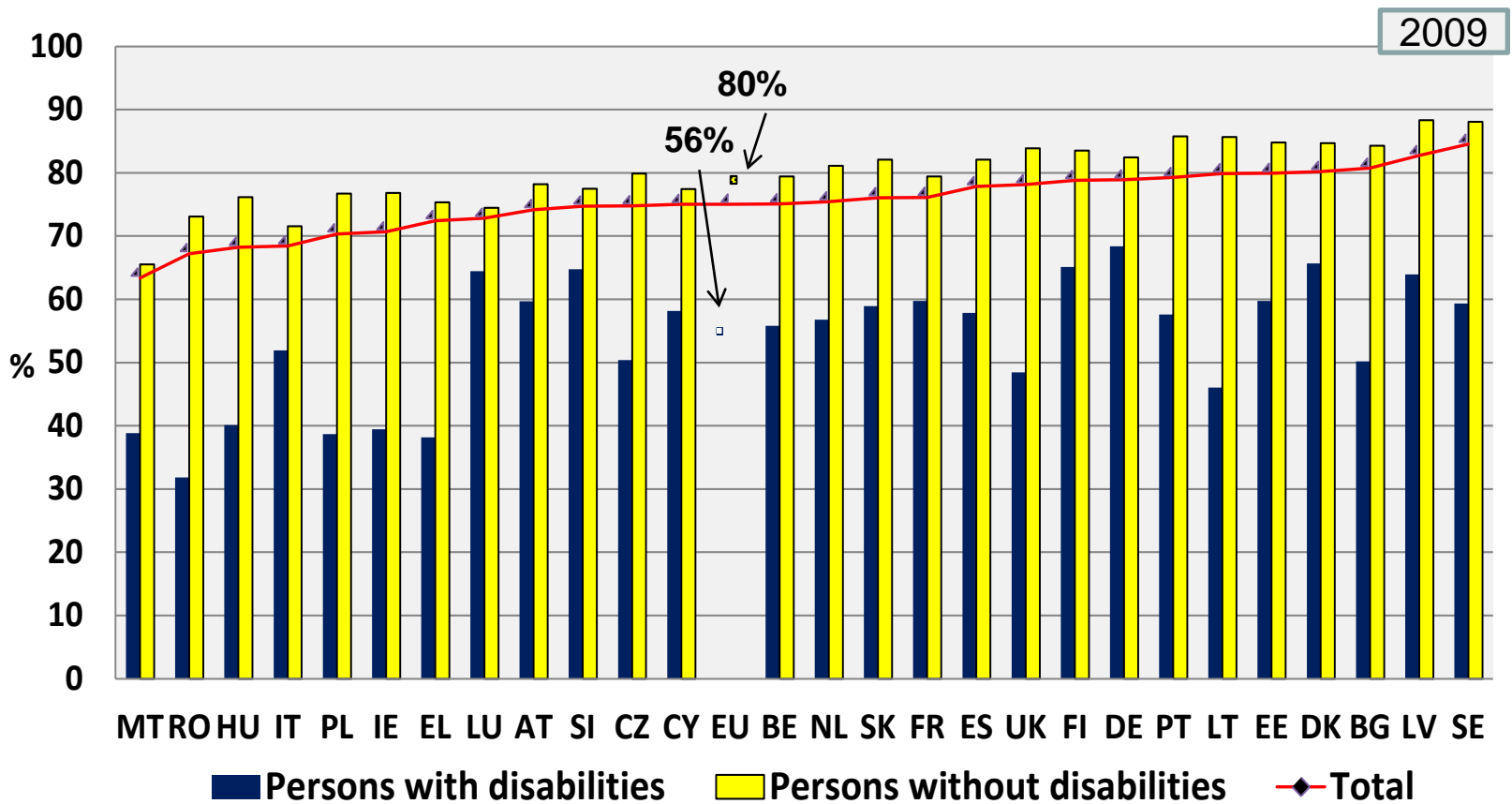
2008: 7%

2009: 9%



# ACTIVITY RATE

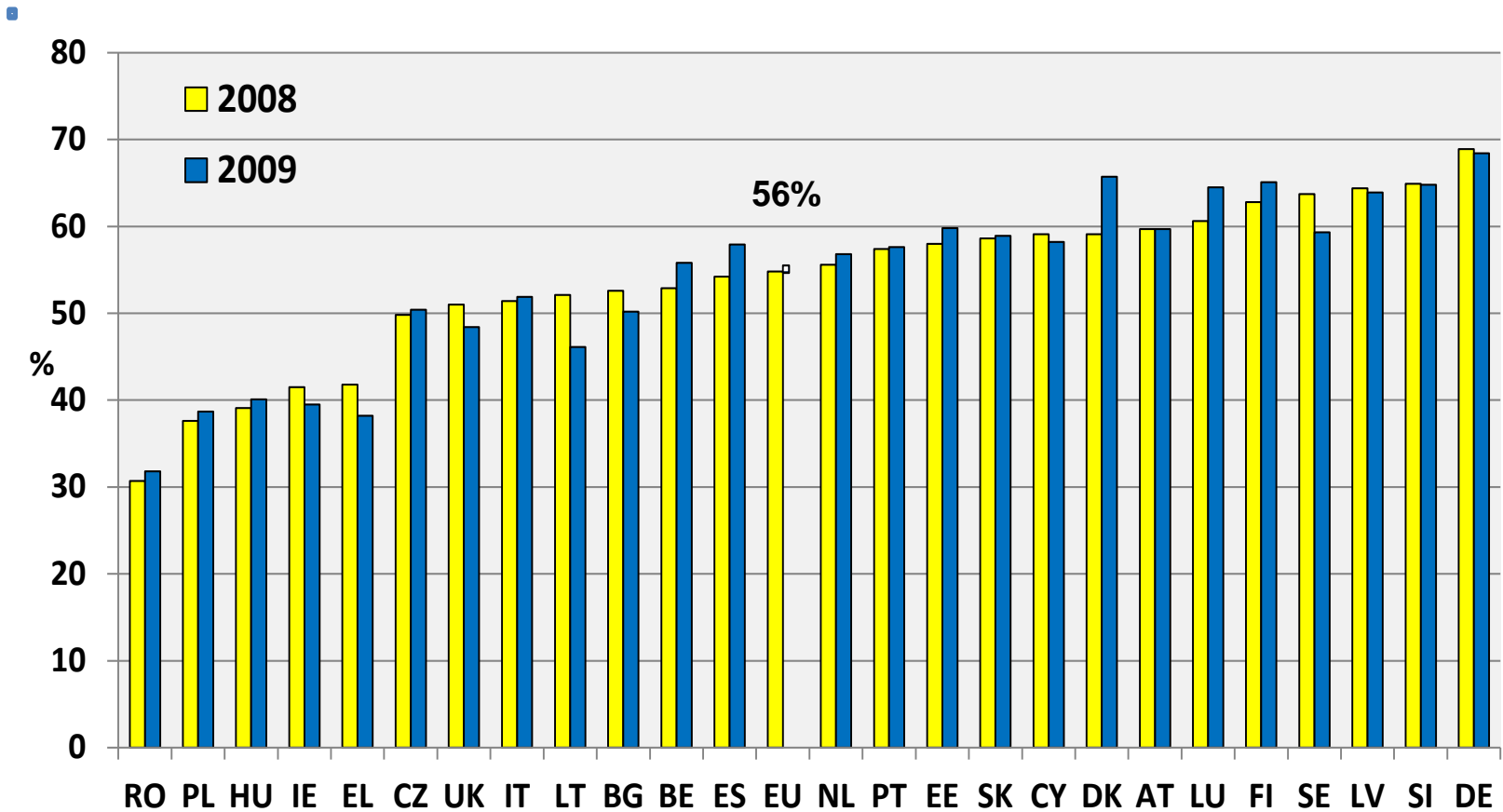
Percent of the population which is employed or unemployed, aged 20-64



EU Female Activity	Disabled: 51%	Non-Disabled: 72%	Total: 68%
--------------------	---------------	-------------------	------------

# PEOPLE WITH DISABILITIES: EVOLUTION OF THE ACTIVITY RATE

Percent of the population which is employed or unemployed, aged 20-64

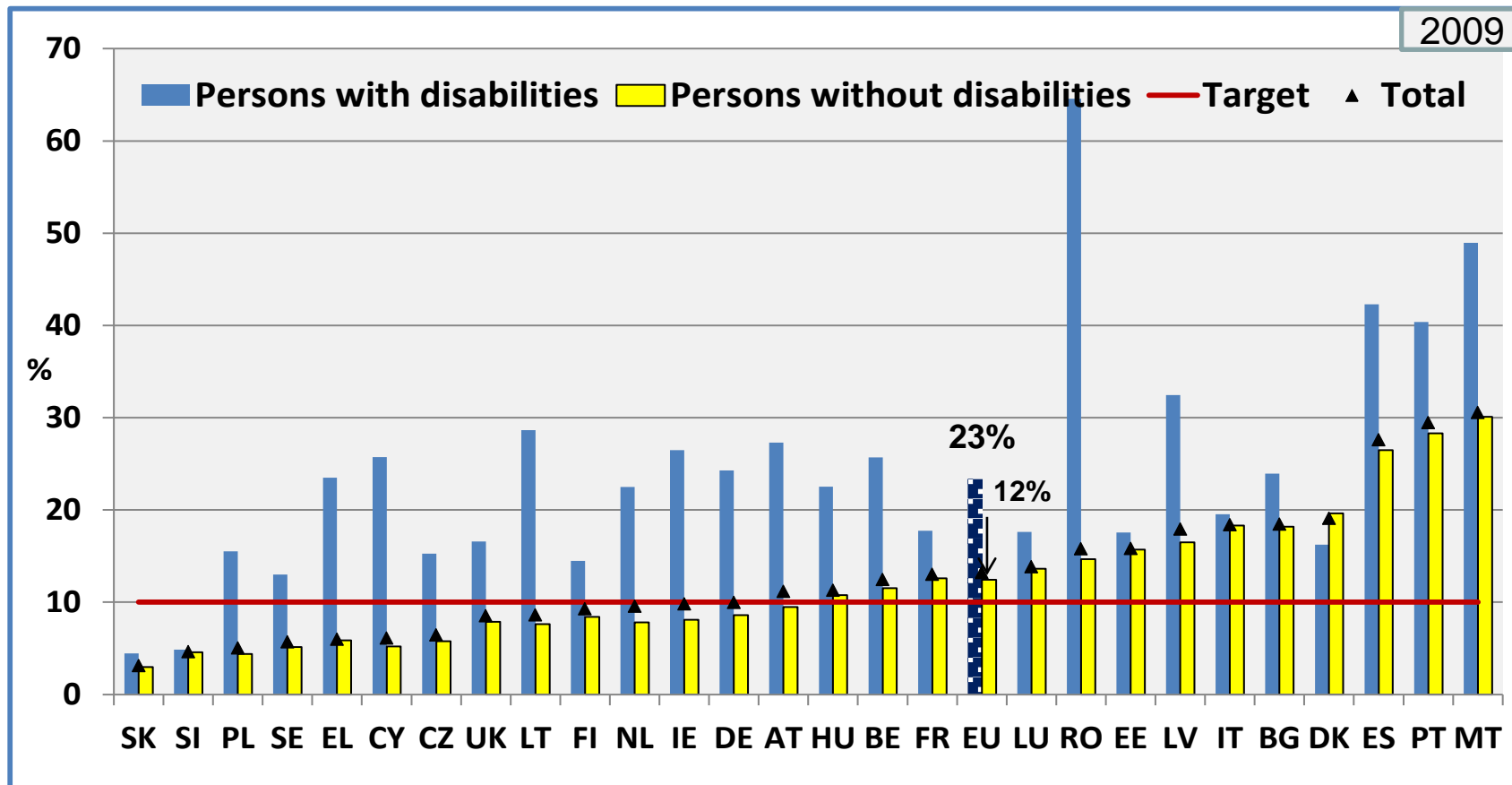


**EU Non-Disabled**      **2008: 79%**      **2009: 79%**

# EARLY LEAVERS FROM EDUCATION AND TRAINING

Europe 2020: 10 percent or less of early school leavers

Percentage of the population aged 18-24 with at most lower secondary education



EU Female

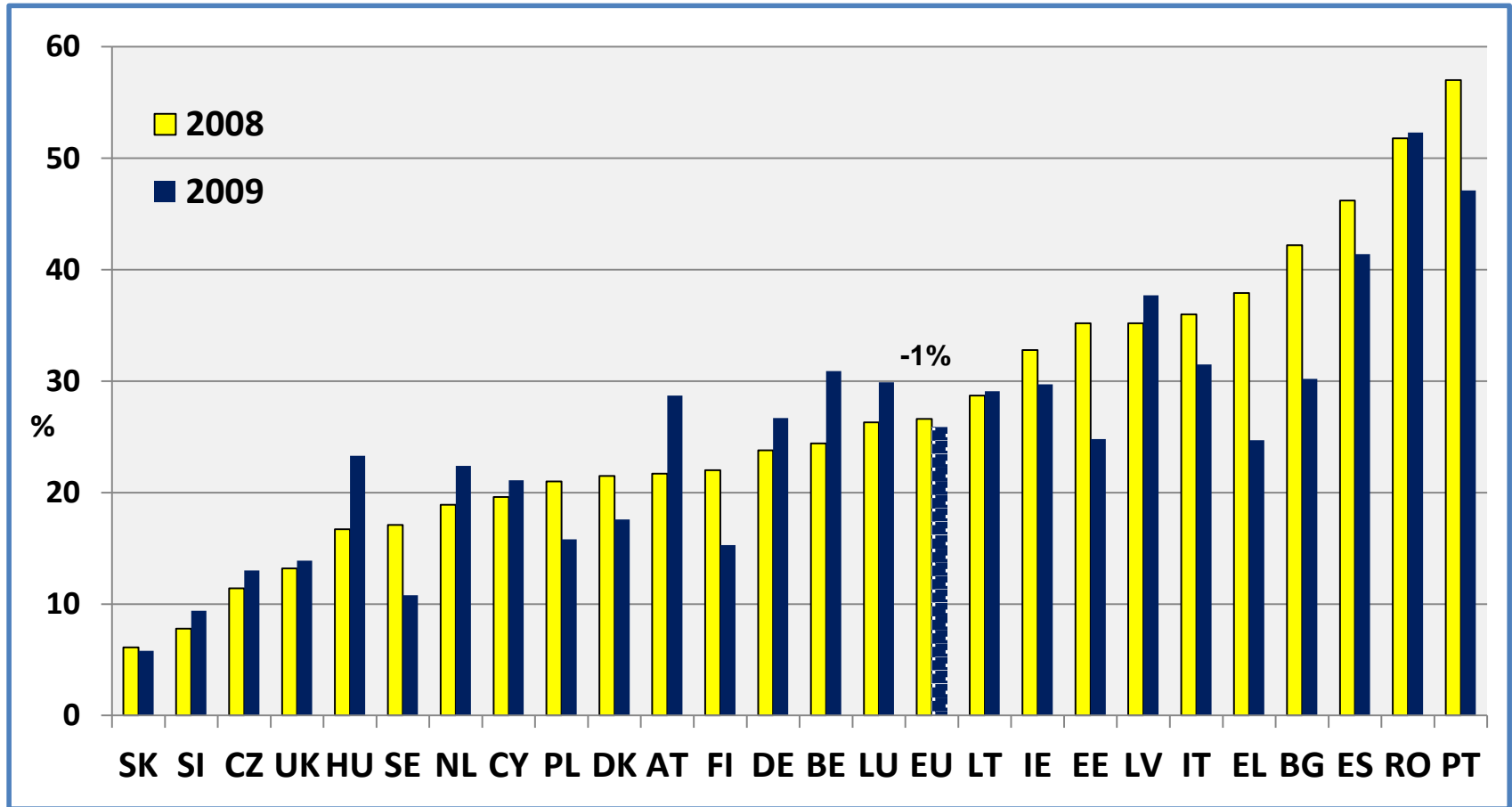
Disabled: 19%

Non-Disabled: 11%

Total: 11%

# PEOPLE WITH DISABILITIES: EVOLUTION OF EARLY SCHOOL LEAVERS %

% of the population aged 18-29 with at most lower secondary education



EU Non-Disabled  
EU Disabled

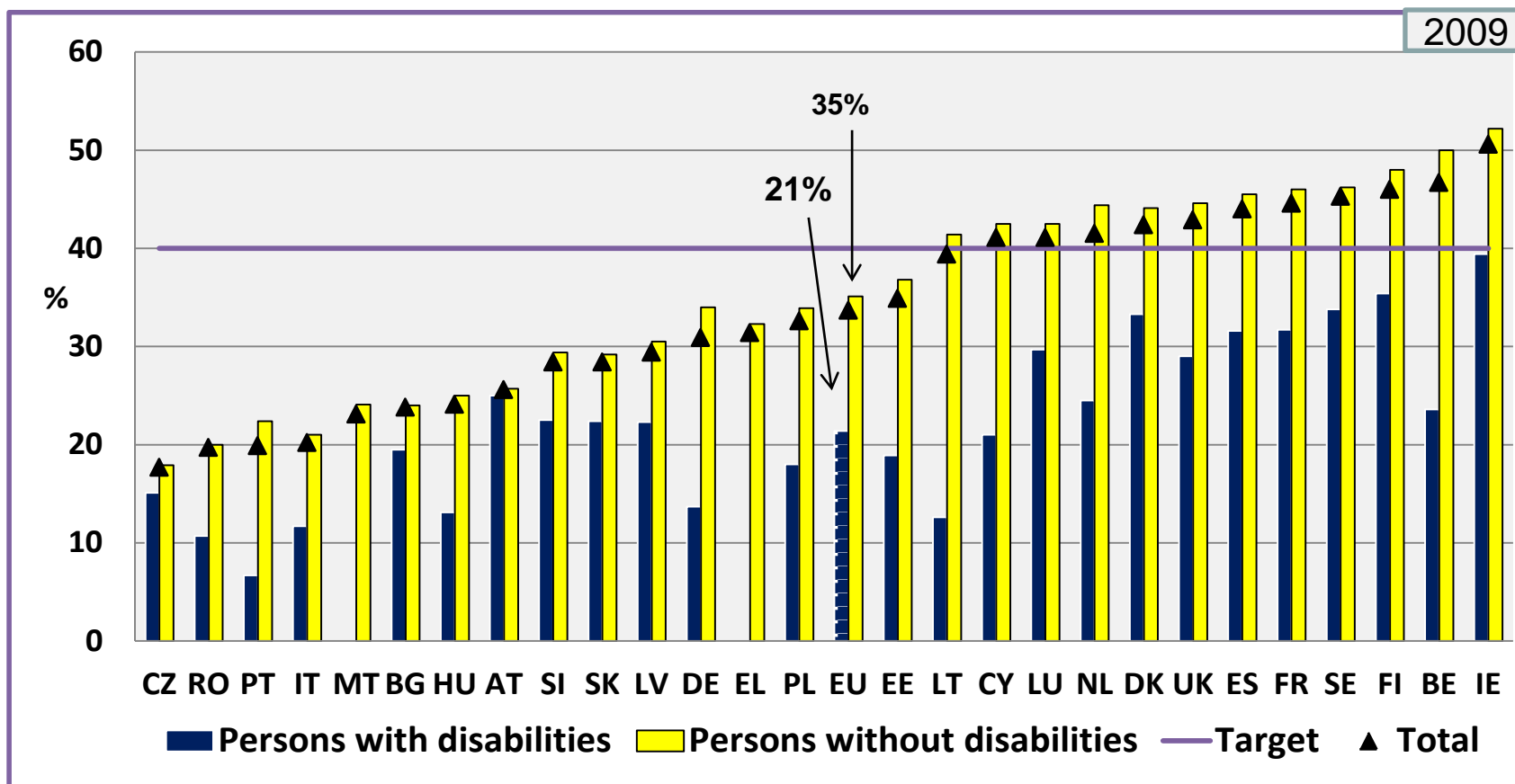
2008: 14%  
27%

2009: 14%  
26%

# PERSONS WHO HAVE COMPLETED A TERTIARY EDUCATION

Europe 2020: At least 40% with tertiary or equivalent education – Age 30-34

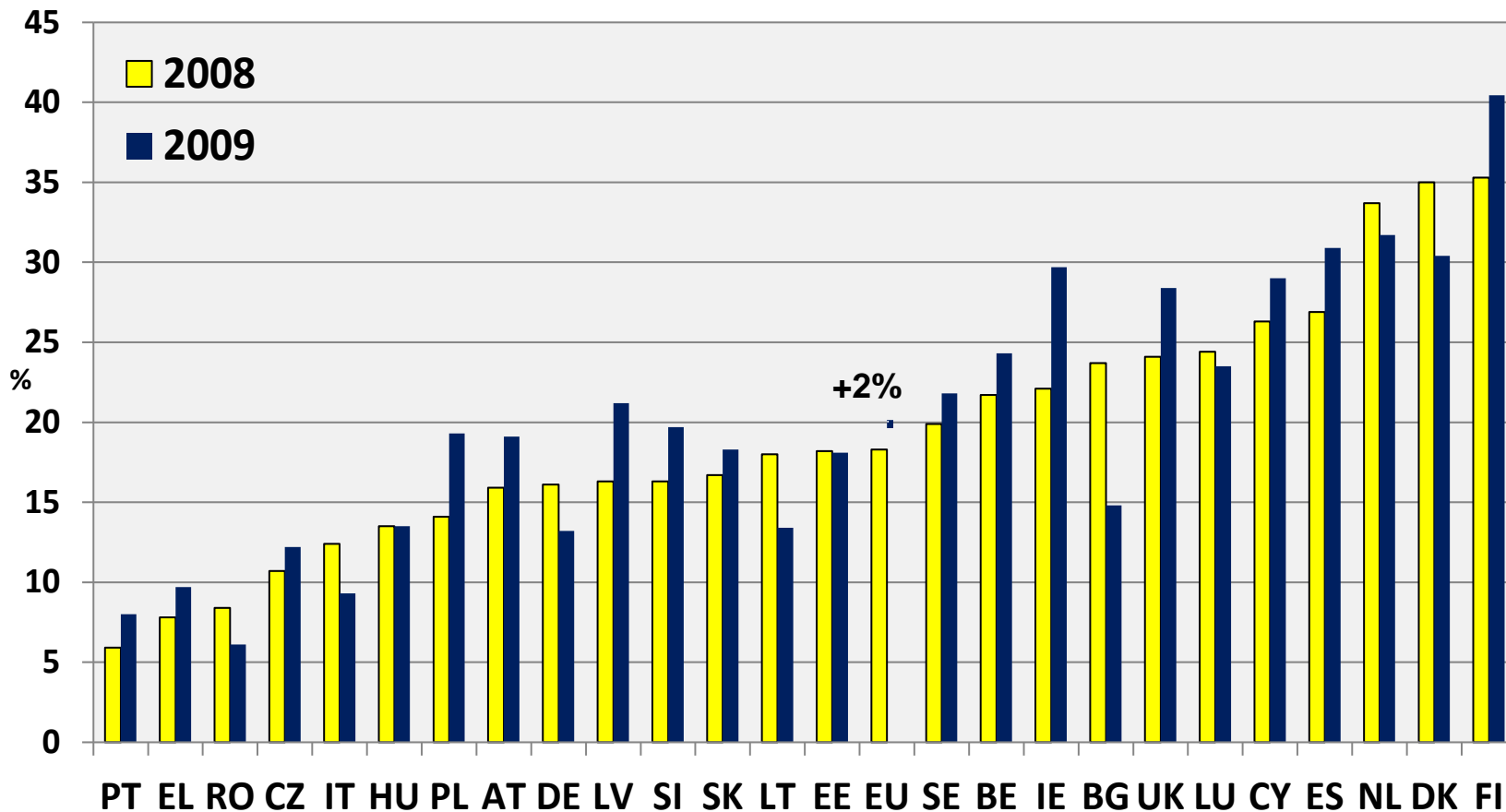
% of persons aged 30-34 who have completed a tertiary or equivalent education



EU Female      Disabled: 25%      Non-Disabled: 39%      Total: 37%

# PEOPLE WITH DISABILITIES: % WITH TERTIARY EDUCATION IN 2008 & 2009

% of persons aged 30-39 who have completed a tertiary or equivalent education



EU Non-Disabled  
EU Disabled

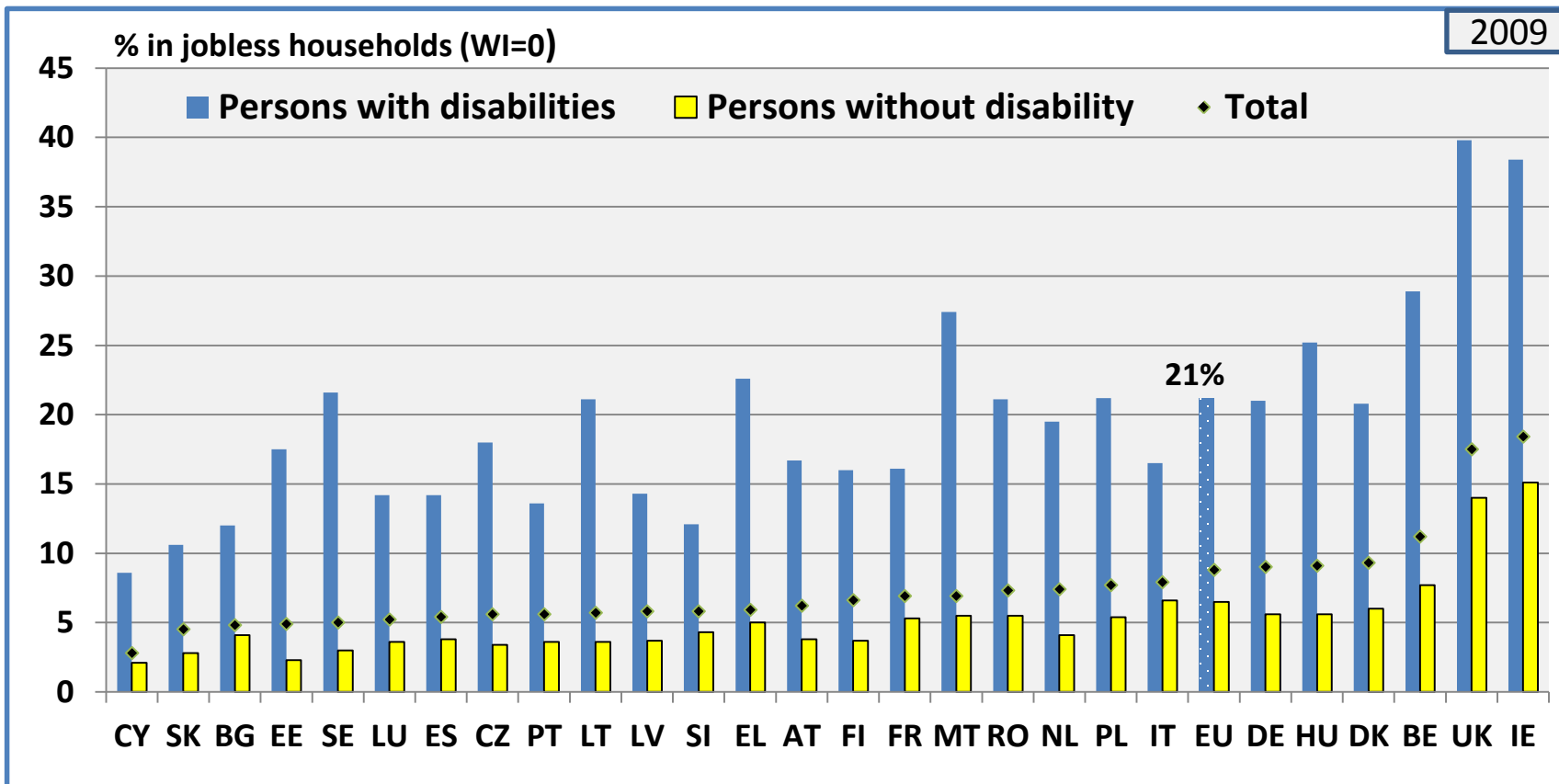
2008: 31%  
18%

2009: 33%  
20%

# PEOPLE LIVING IN HOUSEHOLDS WITH VERY LOW WORK INTENSITY

Europe 2020: component of indicator "population at risk of poverty or social exclusion"

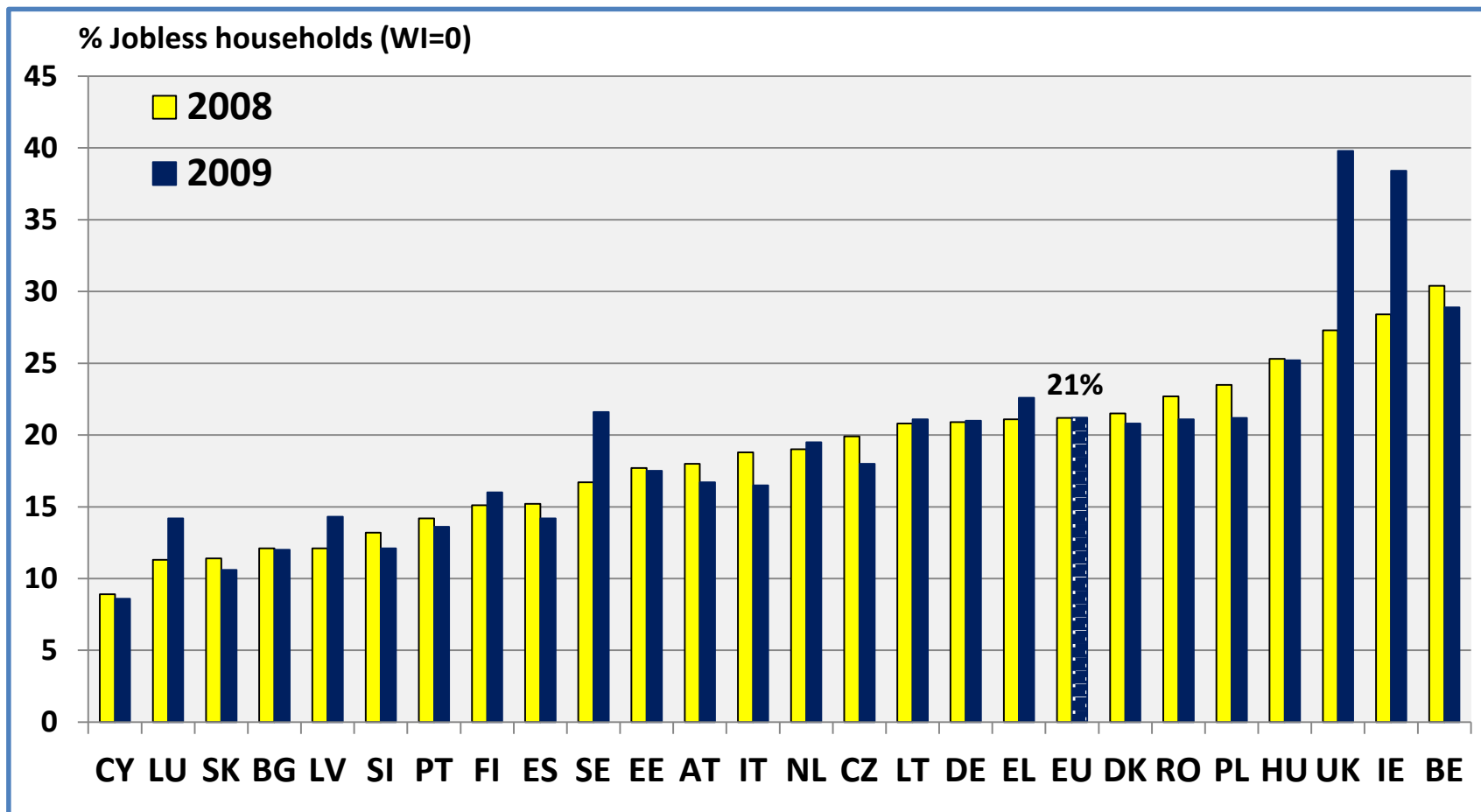
Ratio between the number of months that all working age household members (18-64) have been working during the income reference year and the total number of months that could theoretically have been worked; Age 16-59



EU Female      Disabled: 21%      Non-Disabled: 7%      Total: 10%

# PEOPLE LIVING IN HOUSEHOLDS WITH VERY LOW WORK INTENSITY IN 2008 & 2009

Percent of persons with disabilities living in jobless households (Work intensity = 0), Age 16-59



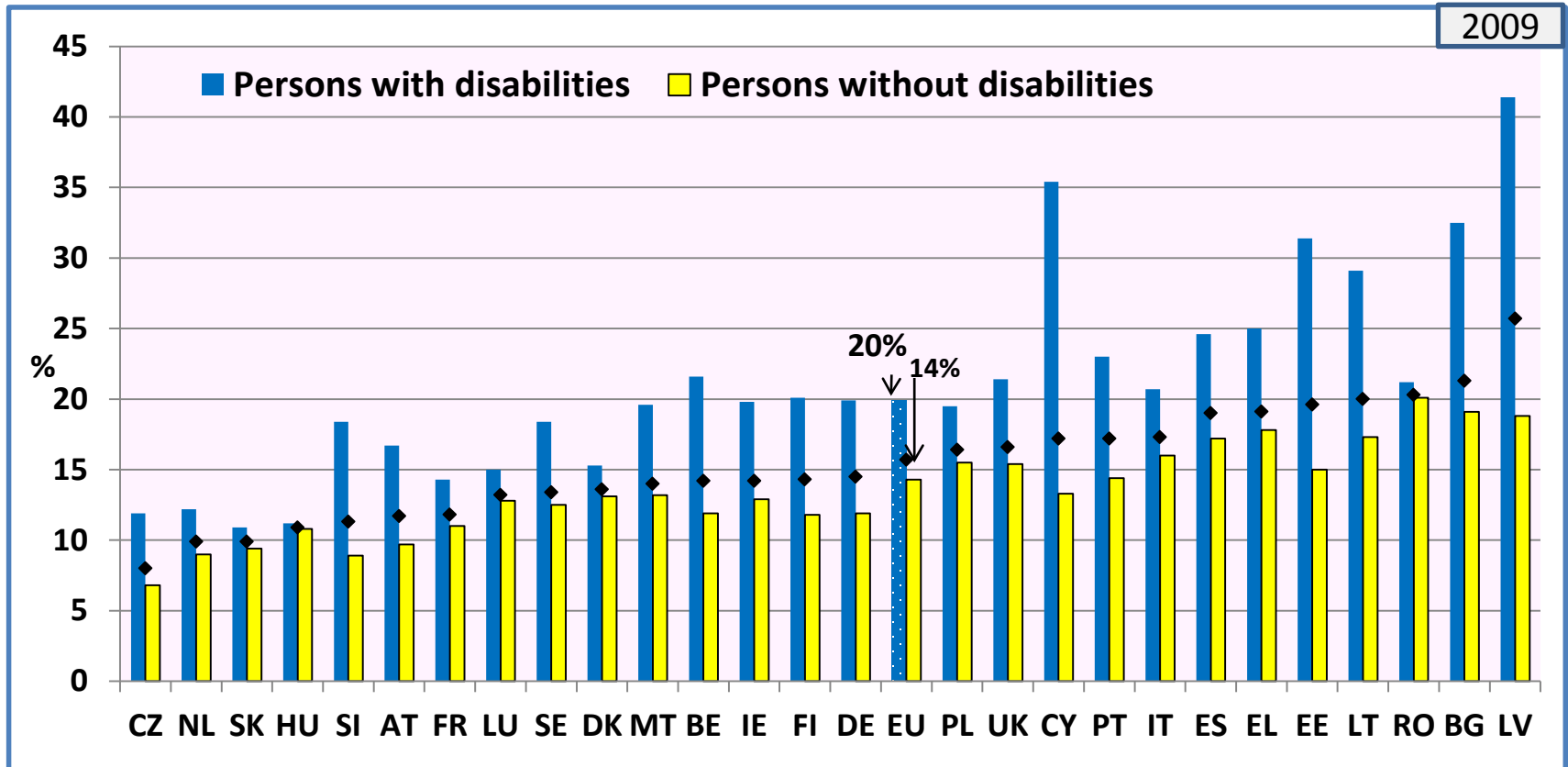
EU Non-Disabled	2008: 6,0 %	2009: 6,5 %
-----------------	-------------	-------------



# PEOPLE AT-RISK-OF-POVERTY AFTER SOCIAL TRANSFERS

Europe 2020: component of indicator "population at risk of poverty or social exclusion"

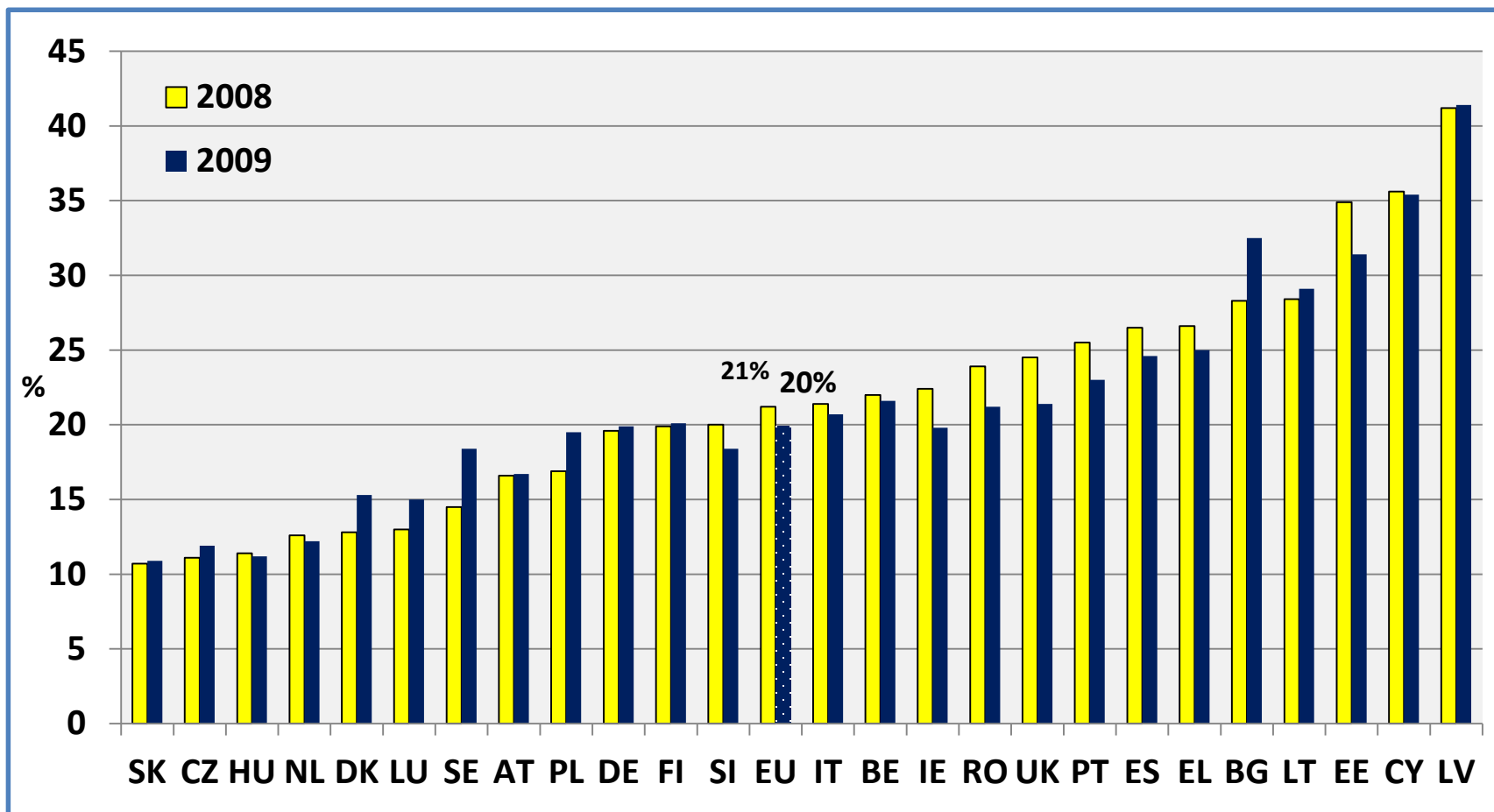
Persons with an equivalised disposable income below the risk-of-poverty threshold, which is set at 60 % of the national median equivalised disposable income (after social transfers); Age 16+



EU Female	Disabled: 21%	Non-Disabled: 15%	Total: 17%
-----------	---------------	-------------------	------------

# PEOPLE WITH DISABILITIES AT-RISK-OF-POVERTY AFTER SOCIAL TRANSFERS

Persons with an equivalised disposable income below the risk-of-poverty threshold, Age 16+



EU Non-Disabled      2008: 15 %      2009: 14 %

## SEVERELY MATERIALLY DEPRIVED PEOPLE

Europe 2020: component of indicator "population at risk of poverty or social exclusion"

Enforced lack of at least four out of nine material deprivation items.

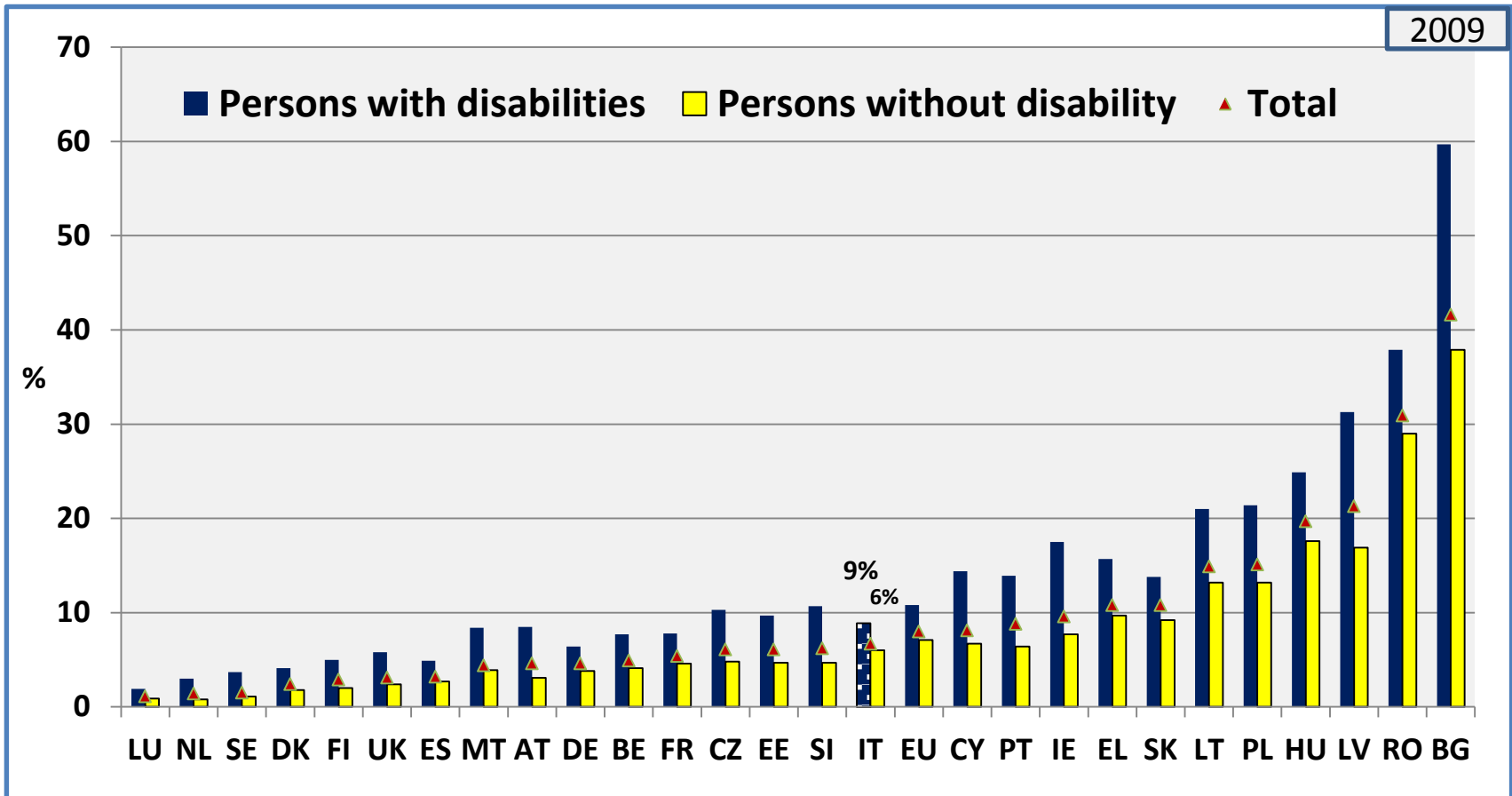
The nine items considered are:

1. Arrears on mortgage or rent payments, utility bills, ... or other loan payments;
2. Capacity to afford paying for one week's annual holiday away from home;
3. Capacity to afford a meal with meat, chicken, fish ... every second day;
4. Capacity to face unexpected financial expenses;
5. Household cannot afford a telephone (including mobile phone);
6. Household cannot afford a colour TV;
7. Household cannot afford a washing machine;
8. Household cannot afford a car and
9. Ability of the household to pay for keeping its home adequately warm.

Specificity of the indicator: Similar across Member States (unlike Financial poverty)

# SEVERELY MATERIALLY DEPRIVED PEOPLE

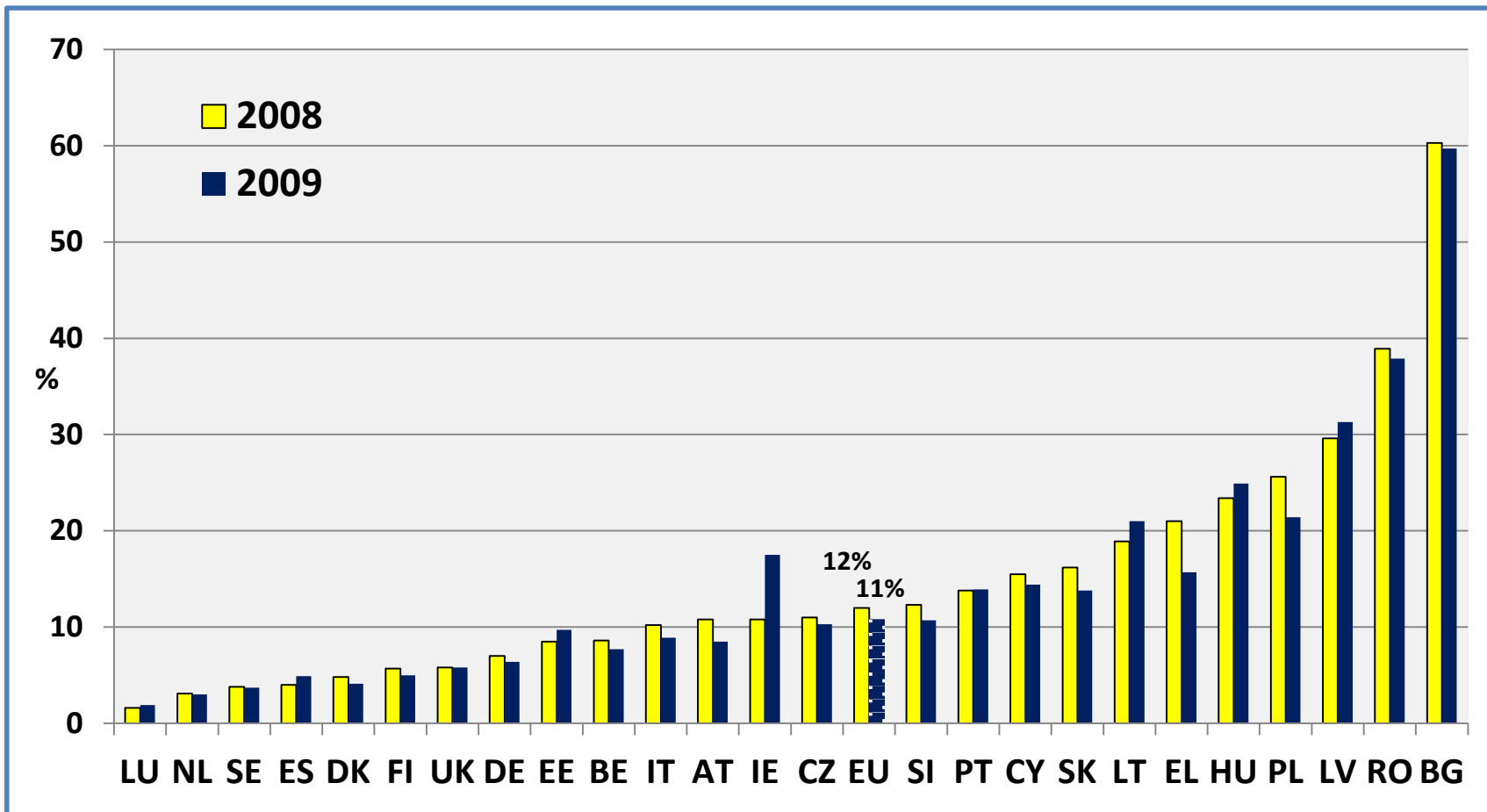
Percent of severely materially deprived persons , Age 16+



EU Female      Disabled: 11%      Non-Disabled: 7%      Total: 8%

# PEOPLE WITH DISABILITIES SEVERELY MATERIALLY DEPRIVED

Percent of severely materially deprived persons , Age 16+

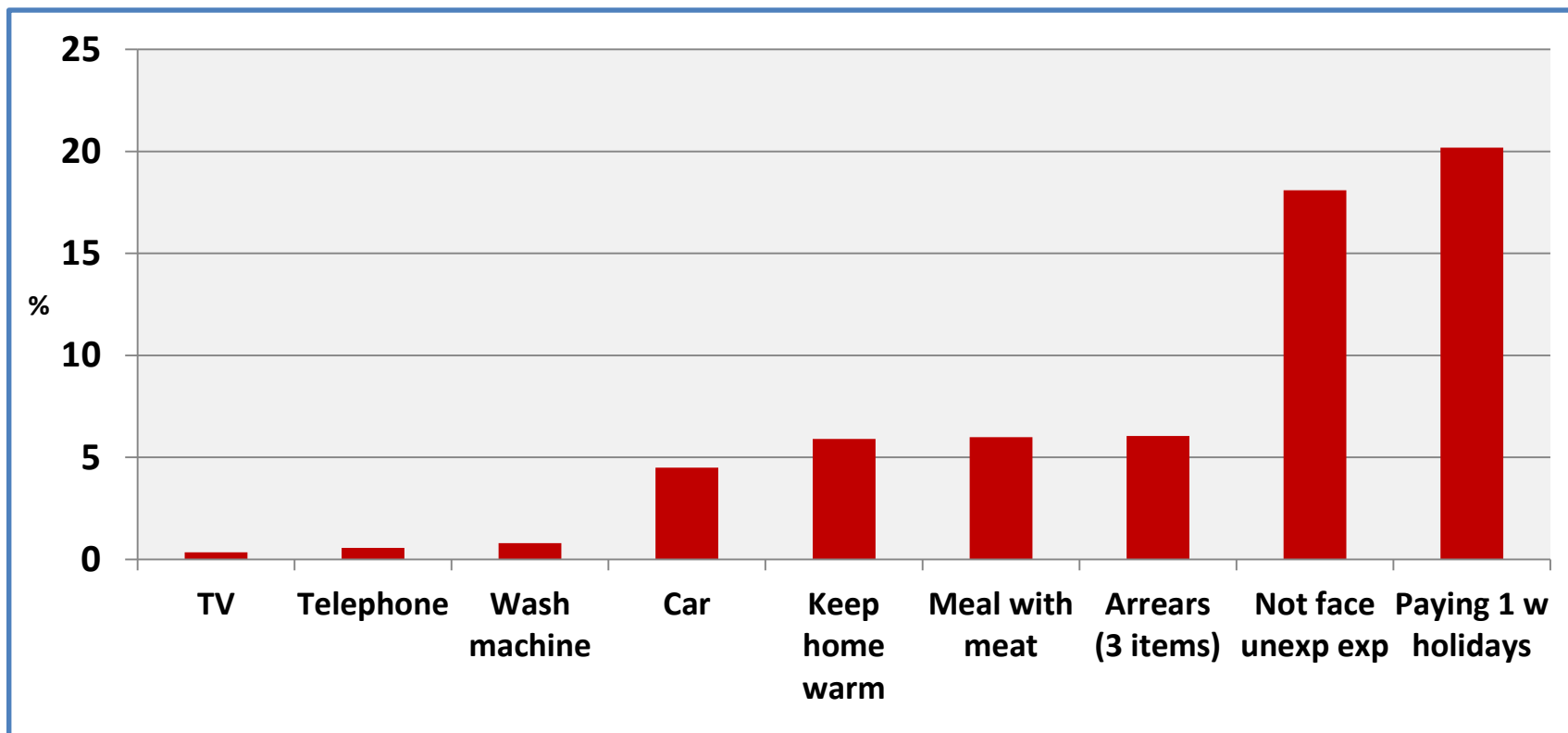


EU Non-Disabled	2008: 8 %	2009: 7 %
-----------------	-----------	-----------

## SEVERELY MATERIALLY DEPRIVED PEOPLE

Enforced lack of at least four out of nine material deprivation items

Increase of the probability to be deprived as a result of disability

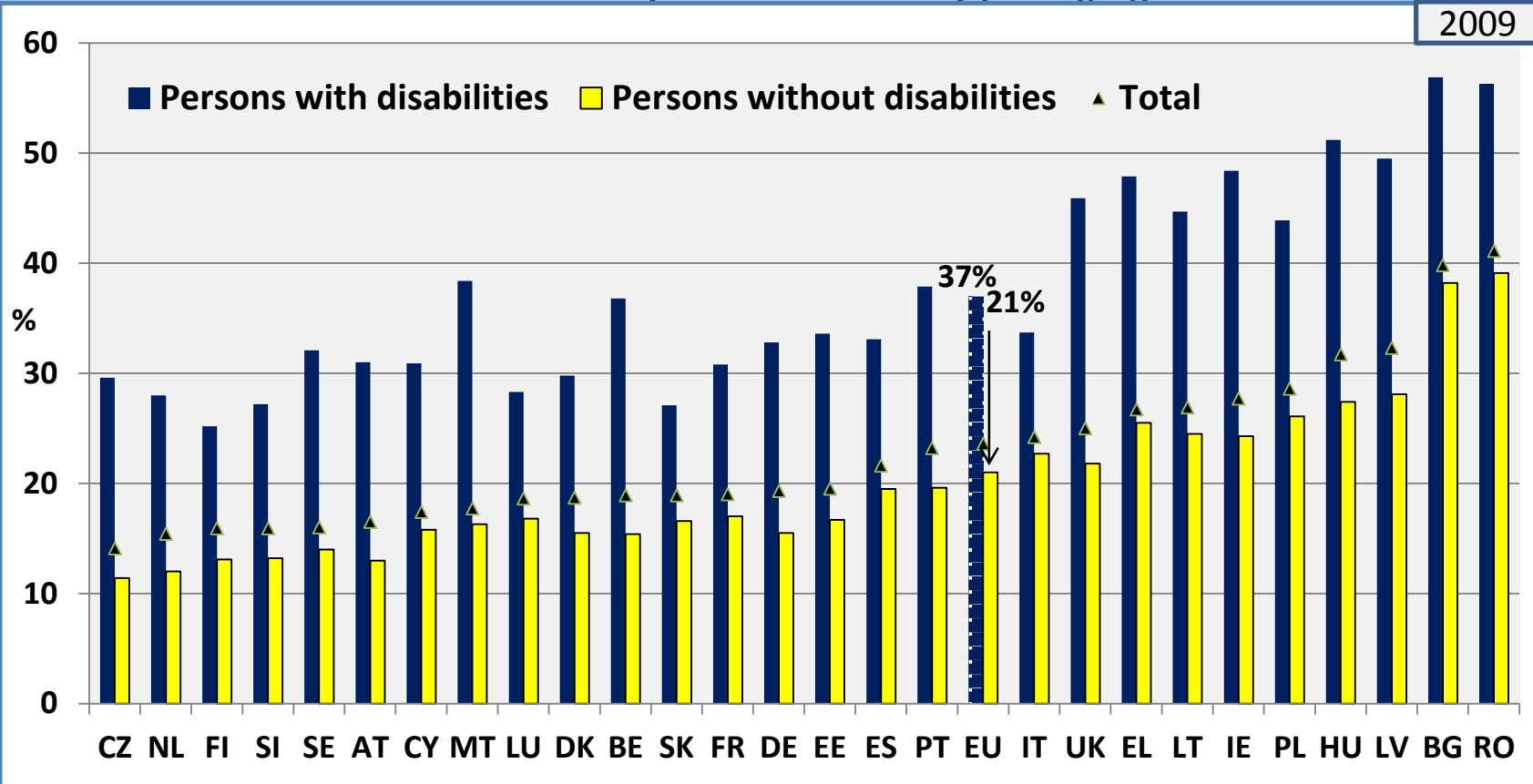


The last item might involve not only financial considerations but also mobility issues

# PEOPLE AT-RISK-OF-POVERTY OR SOCIAL EXCLUSION (Synthesis of 3 above)

EU 2020: Reduce the number of Europeans exposed to poverty and social exclusion

Percent of persons who are either at risk of poverty or severely materially deprived or living in households with very low work intensity (WI=0), Age 16-59



EU Female

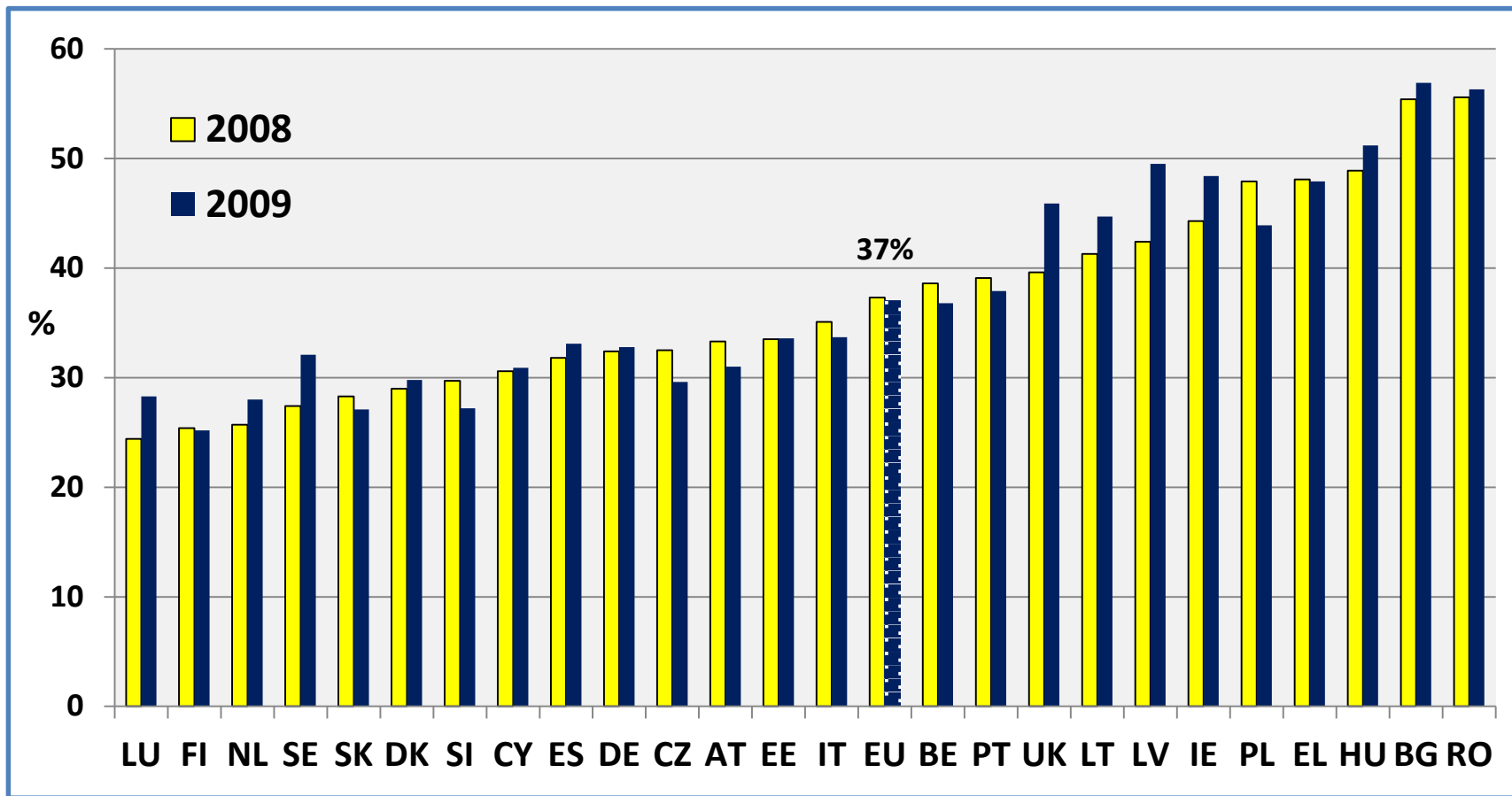
Disabled: 37 %

Non-Disabled: 22 %

Total: 25 %

# PEOPLE AT-RISK-OF-POVERTY OR SOCIAL EXCLUSION (Synthesis of 3 criteria)

Percent of persons with disabilities who are either at risk of poverty or severely materially deprived or living in households with very low work intensity (WI=0), Age 16-59

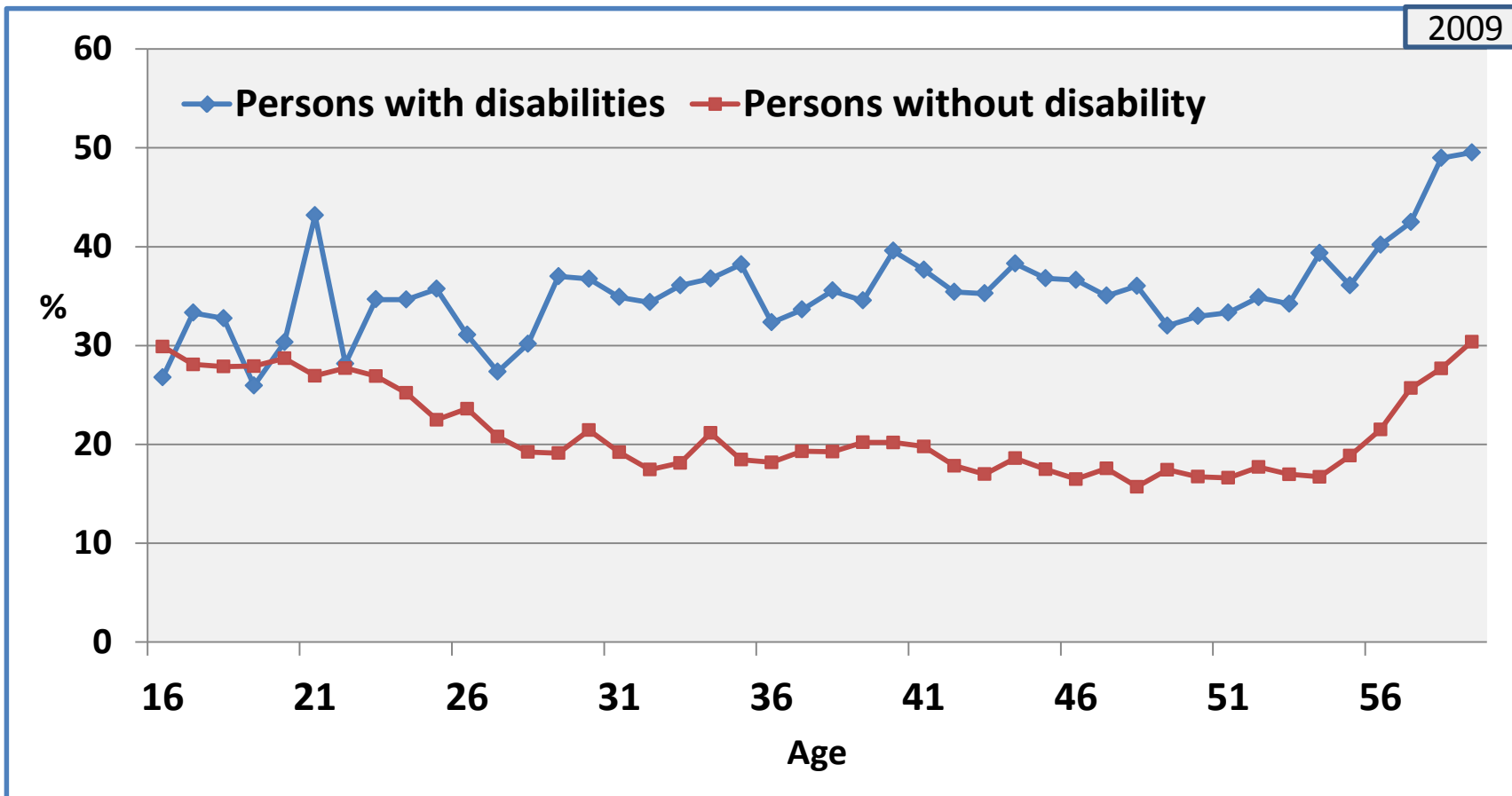


EU Non-Disabled      2008: 21,4 %      2009: 21,0 %



## PEOPLE AT-RISK-OF-POVERTY OR SOCIAL EXCLUSION (Synthesis of 3 above)

Percent of persons who are either at risk of poverty or severely materially deprived or living in households with very low work intensity (WI=0), Age 16-59



Importance of

Employment during active life

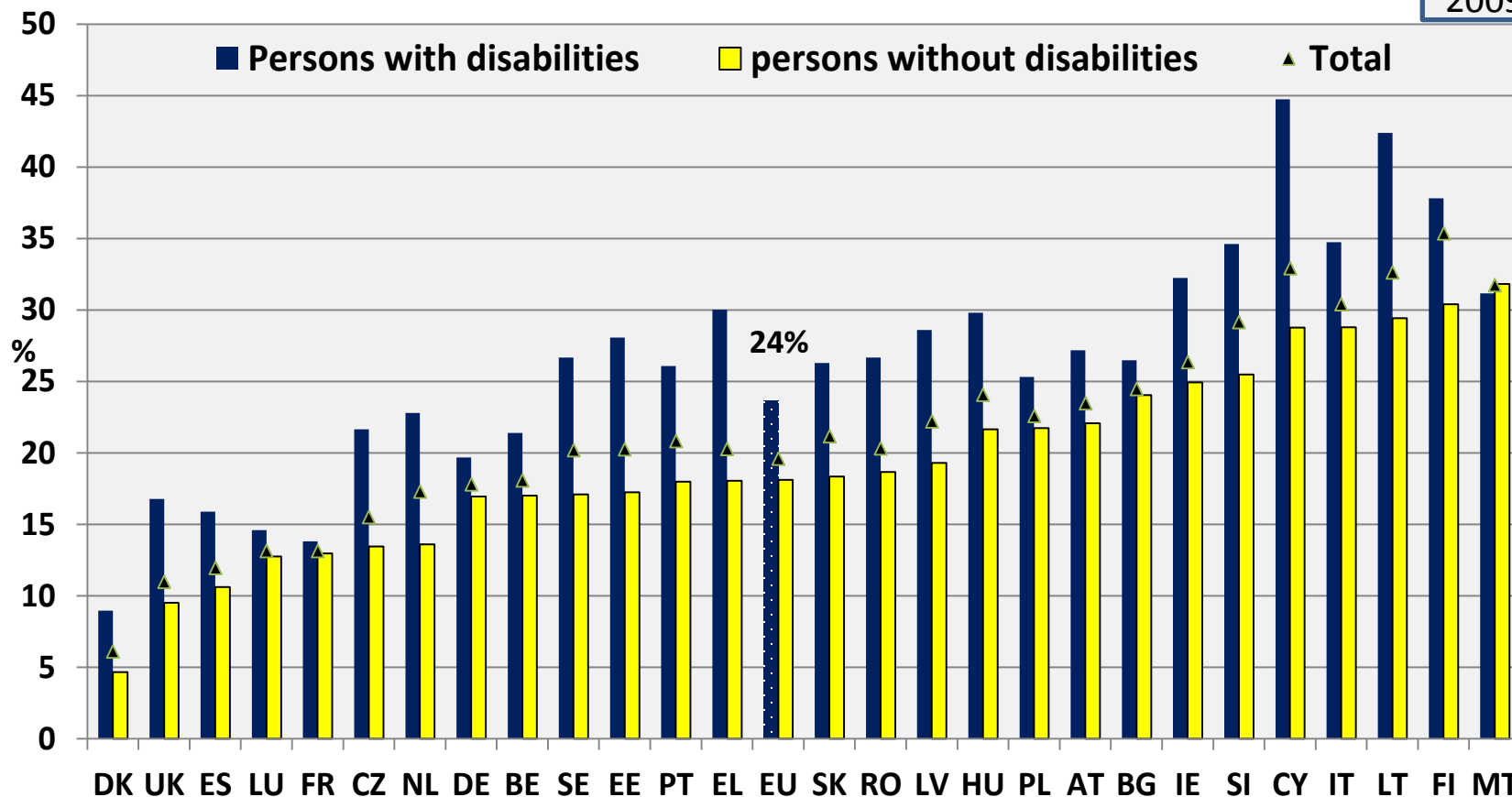
and

Unemployment of Older workers

# ACCESSIBILITY OF PUBLIC TRANSPORT

Percent of persons (in households) with difficult access to public transport, Age: 16+

2009



EU Female

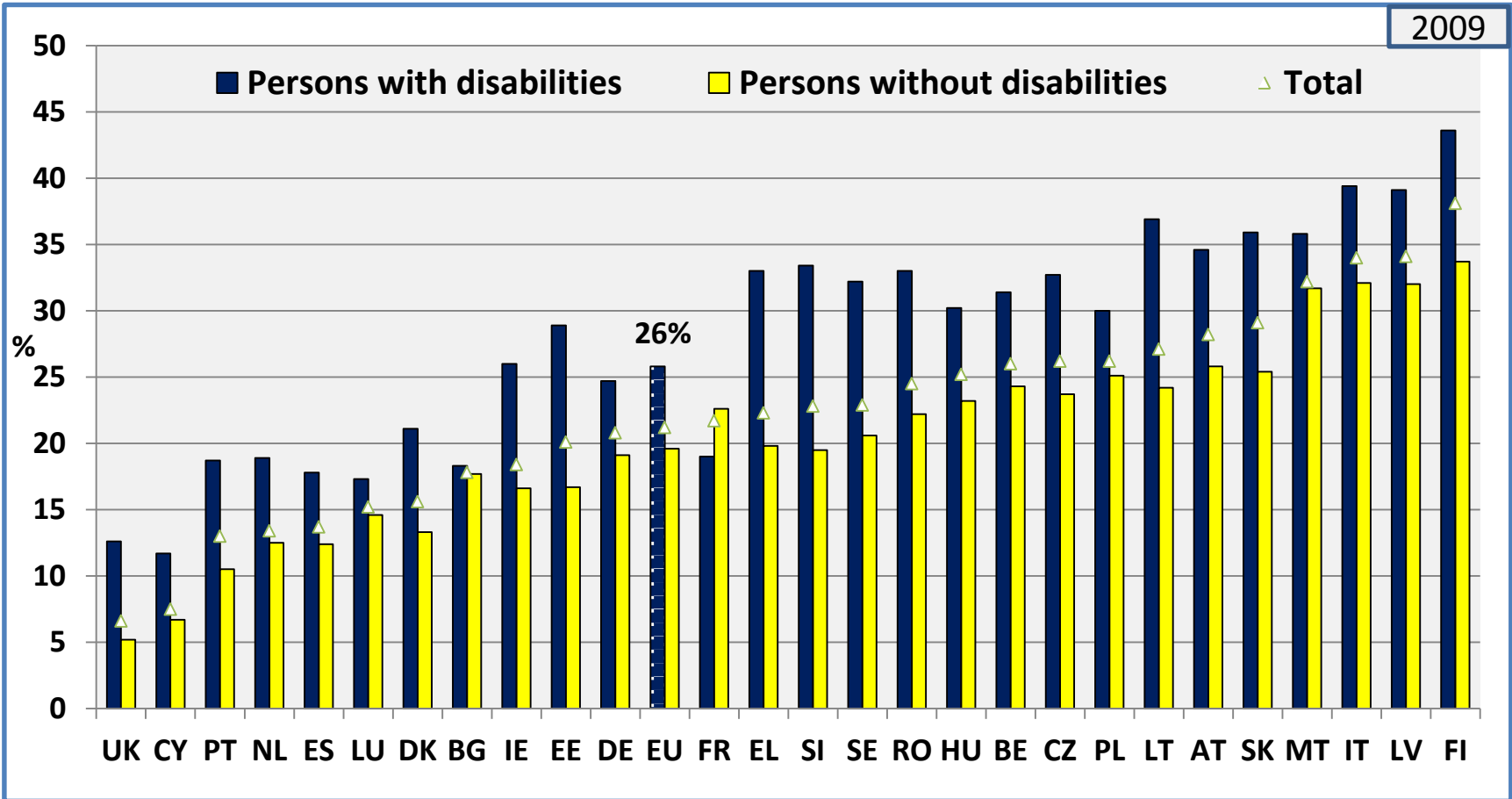
Disabled: 24 %

Non-Disabled: 18 %

Total: 20 %

# ACCESSIBILITY OF POSTAL OR BANKING SERVICES

Percent of persons (in households) with difficult access to postal or banking services, Age: 16+



EU Female

Disabled: 26 %

Non-Disabled: 20 %

Total: 21 %

## Data sources

### **EUROSTAT**

- 1. EUSILC UDB 2008 – version 3 of March 2011**
- 2. EUSILC UDB 2009 – version 1 of March 2011**

**INDICATORS OF DISABILITY EQUALITY IN EUROPE**  
*Comparative data on a selection of quantitative implementation indicators*